

# Anne Davies



# AUDIOLOGY



COURSES

The **1**<sup>st</sup>

## Paediatric Hearing Aids: An Introduction

An Introduction / Update on Clinical Skills for Paediatric Habilitation

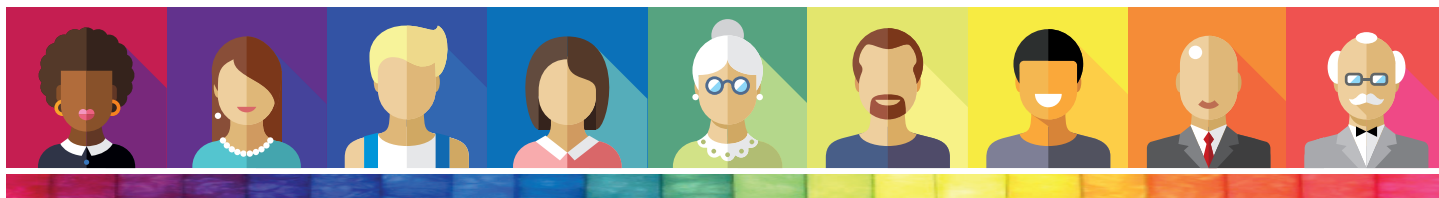
Tuesday 2<sup>nd</sup> - Thursday 4<sup>th</sup> April 2019

## Course Programme

In conjunction with



THE PHONAK ACADEMY



## Tuesday 2<sup>nd</sup> April 2019

9.00	<b>Registration and Coffee</b>
9.15	Welcome
9.25	Course Introduction
9.45	Preparing the Parents
10.20	Difference between Adults and Children
11.05	<b>Break</b>
11.20	Strategies for Testing
11.55	Hearing Aid Provision with Limited Threshold Information
12.45	<b>Lunch</b>
1.45	Prescriptive Approach to Paediatric Hearing Aid Provision
2.35	Verification of Hearing Aid Settings
3.20	<b>Break</b>
3.35	Verification of Frequency Lowering
4.10	Issues after Fitting
5.00	<b>End of Day One</b>

## Wednesday 3<sup>rd</sup> April 2019

9.00	<b>Coffee</b>
9.00	Outcome Measures / Questionnaires
10.05	Wireless Accessories
10.50	<b>Break</b>
11.05	Roger System
11.40	Communicating with Parents, Children and Young People
12.30	<b>Lunch</b>
1.30	Introduction to Complex Fittings
2.20	Transition Services
3.10	<b>Break</b>
3.25	Report Writing
4.00	Multi-Disciplinary Teams
4.35	Discussion & Questions
5.05	<b>End of Day Two</b>

## Thursday 4<sup>th</sup> April 2019

9.00	<b>Coffee</b>
9.15	WORKSHOP (Phonak, Oticon, GN ReSound, Otometrics, Interacoustics & Sivantos)
12.30	<b>Lunch</b>
1.30	Planning the Hearing Aid Fitting & Review
3.05	Course Review & Close
3.40	<b>End of Course</b>

# Anne Davies



## AUDIOLOGY COURSES



## Course Content

### Preparing the Parents

In most cases the parents will decide whether the child wears the hearing aid - we need to get this bit right!

### Difference between Adults and Children

What makes them different and how does that apply to the child, family and ultimately their hearing aids?

### Strategies for Testing

How to get the most from a testing session to ensure the best possible hearing aid set-up.

### Hearing Aid Provision with Limited Threshold Information

This talk will consider the practical considerations when there may be limited or incomplete threshold information to prescribe the amplification. In particular this will cover the availability and uncertainty of Auditory Brainstem Response and Behavioural Audiometry thresholds and guidance on how they should be employed and documented in the clinical record.

### Prescriptive Approach to Paediatric Hearing Aid Provision

The prescriptive approach to paediatric hearing aid provision will be considered including the selection of appropriate parameters in the prescriptive rule and fitting software and the individualisation of the approach through the use of measures such as the Real Ear to Coupler Difference (RECD).

### Verification of Hearing Aid Settings

Things to do with the child and their family once they're wearing their hearing aids, in addition to asking them 'How does that sound?'

### Verification of Frequency Lowering

As frequency lowering is now a standard feature within hearing instrument technology, its use supported by an increasing body of peer-reviewed evidence confirming clinical utility, this presentation will explore the latest 'best-practice' probe microphone verification techniques to assist in optimisation of settings.

### Issues after Fitting

Addressing the needs of children wearing and managing hearing devices following fitting, including maintenance and earpieces; understanding the older children issues around compliance and helping them in dealing with this.

### Outcome Measures / Questionnaires

The range of outcome measures used to assess hearing aid benefit in children, why and what benefits they give.

### Wireless Accessories

A brief introduction to which devices are out there and when to fit them.

### Roger System

An introduction to Phonak's Roger technology and an overview of the connectivity options.

### Communicating with Parents, Children and Young People

Communication skills scenarios and explanation related to hearing aid fitting and reviews.

### Introduction to Complex Fittings

How to approach the hearing aid fitting when dealing with children with unusual hearing loss configurations or other additional needs.

### Transition Services

Transitioning from the paediatric to the adult service can be a daunting proposition - how can we make this as smooth a process as possible for our patients.

### Report Writing

How to let people know what we've done in a way that they can understand.

### Multi-Disciplinary Teams

Examples of other professionals that we could (and should!) work with.

### Planning the Hearing Aid Fitting & Review

Why do we plan the session, examples of case studies and planning for hearing aid fitting and reviews and specific considerations for children.

## Course Faculty

### Georgie Hill

Clinical Scientist / Children's Senior Commissioning Manager  
Derbyshire CCG,  
Chesterfield

### Dr Greg Nassar

Principal Clinical Scientist (Audiology)  
Head of Audiology Services  
Trafford Hospitals,  
Manchester University NHS FT,  
Manchester

### Adam Walker

Clinical Scientist (Audiology)  
Trafford Hospitals,  
Manchester University NHS FT,  
Manchester

### Kathryn Lewis

Head of Audiology  
Withington Community Hospital,  
Manchester University NHS FT,  
Manchester

### Kathryn Woolley

Head of Audiology  
Leighton Hospital,  
Crewe

### Ed Brown

Consultant Clinical Scientist (Audiology),  
Head of Audiology,  
Royal Hospital,  
Sunderland

Also with talks from:

### Graham Hilton

Head of Professional Services,  
Phonak UK

### Tony Murphy

Wireless Communications Specialist,  
Phonak UK

In conjunction with



THE PHONAK ACADEMY

